

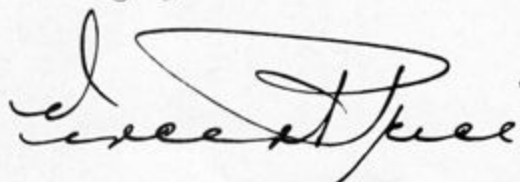


S E A R S , R O E B U C K A N D C O .



VincentPriceExhibit

"Art is meant for everyone, and now can be bought by everyone at Sears. I have personally selected every item offered, and am convinced that the scope of this collection is unparalleled in the world of art. It holds something for every taste as well as something for every budget. I urge you to examine this catalog carefully; its contents will surprise and delight you."



VINCENT PRICE



A work of art is a unique experience, both for the artist who creates it and the observer who lives with it.

The Vincent Price Collection proudly presents an extraordinary opportunity to art collectors everywhere, encompassing Original works of Fine Art from the past Five Centuries... from Dürer to Picasso. These originals include etchings, lithographs, engravings, and woodcuts personally selected by a recognized art collector whose reputation is exceeded only by his impeccable taste and unchallenged ability in the field.

Now, for the first time, Sears offers these original works of art exquisitely framed and ready for hanging in your home and office.

This catalog represents some of the finest works in the Vincent Price Col-

lection. Limited editions are offered as long as they last. Periodically, replacement supplements will be mailed to you to bring your catalog up to date. In the event that your selection is no longer available, we suggest that you indicate an alternate choice.

No reproduction can do justice to these great original works of art. They are unique in every respect; they convey an impression that is intimate and vital, and will lend character and interest to your home.

Begin your own Art collection today. Indeed, with Sears Easy Payment Plan, with which No Down Payment is required for your purchases, there is no need to deny yourself the pleasure and stimulation of owning as many fine works of art as you like.





F12 M 1



F12 M 4

Baskin

LEONARD BASKIN
(1922-) American

Leonard Baskin is one of America's most illustrious printmakers and sculptors. He has grasped and absorbed an unrivaled command of the art of the past and in his work finds a perfect marriage, fusing the modern idiom with classic tradition. His themes are often as much political and social as they are artistic.

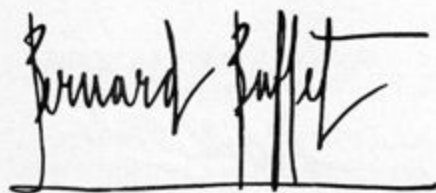
F12 M 1—MARIGOLD. Colored etching, green. Signed and numbered. 29x23 inches, framed, gold leaf... **\$140**

PORTRAITS OF GREAT ARTISTS

F12 M 2—BLAKE. Etching, black and white. Signed and numbered. 29x23 inches, framed, carved Spanish, gold patina... **\$165**

F12 M 3—MANTEGNA. Colored etching, red. Signed and numbered. 29x23 inches, framed, carved Spanish, gold patina... **\$165**

F12 M 4—GOYA. Etching, black and white. Signed and numbered. 29x23 inches, framed, carved Spanish, gold patina... **\$165**



BERNARD BUFFET
(1928-) French

Bernard Buffet's personal style of post-war anguish and despair has been accepted by a large, significant public as a way of viewing and remembering contemporary life. Today, his ability as an extremely able draftsman has made him one of the most popular and successful of the modern French artists.

F12 M 5—LA ROUTE. Colored lithograph, red, blue, black, yellow, and white. Signed and numbered. 38½x30½ inches, framed, contemporary, gold leaf, linen liner... **\$175**



F12 M 5



Calder

ALEXANDER CALDER
(1898-) American

Since World War II, Alexander Calder has become an internationally celebrated artist. Best known for his ingenious "mobiles," his work is peculiarly an expression of 20th Century science, engineering and mechanics. In his mobiles, solid forms and spatial voids are balanced with rhythmic precision and are set in motion. Calder's theories of movement in space are related to the free curves and colors of Miró.

F12 M 6—COMPOSITION IN BLACK AND RED. Colored lithograph, black and red. Signed and numbered.

32½x25¼ inches, framed, contemporary, gold leaf.....\$135



F12 M 6



F12 M 7

Frasconi

ANTONI FRASCONI
(1919-) Uruguay

During his illustrious career Antoni Frasconi has received many international awards. His art has always been refined and inventive. In his portrait of Brecht, he faithfully captures Brecht's simmering irritabilities. His fascinating red handwriting stumbles and stammers...here his pen flows and there it stops...

F12 M 7—BRECHT. Colored lithograph, red and black. Signed and numbered.

40x32 inches, framed, ebony finish with a red insert.....\$150





F12 M 8

Marc Chagall

MARC CHAGALL

(1887-) Russian

Concerned with other things, the art of our century has abandoned the Bible as a traditional source of inspiration. Today, however, Marc Chagall's Bible Series, fifteen years in the making, has become an integral part of the Biblical World, as well as of the World of Art.

In his beautifully hand-colored etchings, Chagall successfully expresses his capacities to create the gay and the sorrowful, the grave and the charming. His Bible Series forms one of art's greatest achievements and in his original etchings, Chagall has responded keenly and deeply to the meaning of the Bible.

This major work comes as a crowning achievement in Religious Art, harking back to the grandeur of early Christian and Medieval Art and even to the powerful hand of Rembrandt.

F12 M 8—THE BIBLE. Hand-colored etching, red, blue, yellow, violet, orange and green. Signed and numbered. 25½x22½ inches, framed, French, gold leaf, linen liner. \$300

NOTE: Shown here are only two examples of Chagall's Bible Series. Similar themes available for your purchase are offered as long as they last.

COROT

JEAN BAPTISTE COROT

(1796-1875) French

For the 19th Century, Jean Baptiste Corot forms the focal point toward which all of his predecessors worked and from which burst forth the great future of the French landscape. Corot's development of the Romantic world of grace and charm devoid of the violence of nature is best stated by his timeless theme, the capturing of nature's misty landscape.

F12 M 9—SOUVENIR D'ITALIE. Etching, black and white. 19½x14½ inches, framed, contemporary, silver leaf. \$45

F12 M 10—ENVIRONS DE ROME. Etching, black and white. 19½x14½ inches, framed, contemporary, gold leaf. \$45

NOTE: These selected etchings were never signed by Corot.



F12 M 9



H. Daumier

HONORE-VICTORIN DAUMIER
(1808-1879) French

Honoré Daumier was a marvelous satirist and caricaturist, and his lithographic work has assured him a place among the most glorious artists of all times. His genius was abundant and varied, powerful and resourceful, and in his day, Daumier proved that the pen is mightier than the sword. In Daumier's eyes, man is always seen as good, regardless of the corruption and brutalities that life might have imposed on him. Daumier's work can be found in almost every major collection of Fine Art.

THE WORLD OF DAUMIER

F12 M 11—SOCIAL THEMES OF 19TH CENTURY FRANCE. Hand-colored lithograph, red, blue, green, yellow, and orange. Signed in the plate. 16x20 inches, framed, antique gold. \$75

F12 M 12—POLITICAL THEMES OF 19TH CENTURY FRANCE. Hand-colored lithograph, orange, blue, red, yellow, green, and pink. Signed in the plate. 16x20 inches, framed, antique gold. \$75

NOTE: During his lifetime Daumier created more than 4000 original lithographs. Available for your own art collection are similar social and political subjects, alike in subject matter, content and feeling.



F12 M 14



F12 M 13



Jac Callot

JACQUES CALLOT
(1592-1635) French

Jacques Callot was one of the greatest etchers and engravers of all times. He perfected the basic procedures of etching, and his works demonstrate a technical brilliance and zest for life which have influenced artists as diverse as Rembrandt and Goya. His records of war, the firing squad, rape, and burning at the stake are strikingly believable.

F12 M 13—THE MISERIES OF WAR. Engraving, black and white. Signed in the plate. 20x15 inches, framed, contemporary, gold leaf. \$45

F12 M 14—THE GREAT APOSTLES. Engraving, black and white. Signed in the plate. 19x14 inches, framed, contemporary, gold leaf. \$40

NOTE: Illustrated here are two examples of Callot's work. Similar themes, alike in content and feeling will add elegance to any collection of classic art...



F12 M 12





F12 M 21



F12 M 22

Goya

FRANCISCO GOYA
(1746-1828) Spanish

Francisco Goya is one of the true giants in the history of art. During the chaotic period of the French Revolution and the Napoleonic Era, his art commented on the social and political scene in Spain. At the time of one of history's most abrupt periods of transition, Goya focused his attention on its gaiety and despair, its foolishness and dignity. However, he did more than portray the historical events of his time. Anticipating the art of today, he was one of the first artists to explore not only the nature of the human condition, but the realm of the unconscious. Goya labeled his first great series of etchings *Los Caprichos*, or fantasies, distorted glimpses of reality. In *Los Caprichos*, Goya's caricatured forms and figures expressed his vision of Man... Man who had strayed from the path of reason. Today, *Los Caprichos* are important collectors' items.

F12 M 21—LOS CAPRICHOS, SUBJECTS OF ANIMALS. Etching, black and white, 12x10 inches, framed, deep walnut, linen liner, gold insert... \$110

F12 M 22—LOS CAPRICHOS, SUBJECTS OF MAN. Etching, black and white, 12x10 inches, framed, deep walnut with linen liner and gold insert. \$110

PLEASE NOTE: *Shown here are only two examples of LOS CAPRICHOS. Available for your purchase are similar subjects of Animals and Man. As was customary, Goya rarely signed his etchings in the plate.*

A

ALBRECHT DÜRER
(1471-1528) German

Albrecht Dürer ranks with the greatest artists of all time. He was known not only for supreme achievements in all fields of art, but also because like Leonardo de Vinci, he was one of the first men to take the giant step out of the Dark Ages into the light of modern times. His woodcuts and engravings are still considered the finest ever done. Upon seeing the work of Dürer, one is immediately struck with his wonderful genius.

F12 M 15—VIRGIN AND CHILD IN SWADDLING CLOTHES. Engraving, black and white. Initialed in the plate. 20x16 inches, framed, contemporary, gold leaf... \$520

F12 M 16—THE COOK AND HIS WIFE. Engraving, black and white. Initialed in the plate. 20x18 inches, framed, contemporary, gold leaf... \$225

F12 M 17—THE ENTOMBMENT. Engraving, black and white. Initialed in the plate, dated 1512. 20x17 inches, framed, contemporary, gold leaf... \$195

F12 M 18—CHRIST CROWNED WITH THORNS. Engraving, black and white. Initialed in the plate. 30x28 inches, framed, contemporary, gold leaf... \$245

F12 M 19—THE FLAGELLATION. Woodcut, black and white. Initialed in the plate. 26x22 inches, framed, contemporary, gold leaf... \$195

F12 M 20—THE REJECTION OF JOACHIM BY THE HIGH PRIEST. Woodcut, black and white. Initialed in the plate. 15x12 inches, framed, contemporary, gold leaf... \$250



F12 M 15



Marie Laurencin

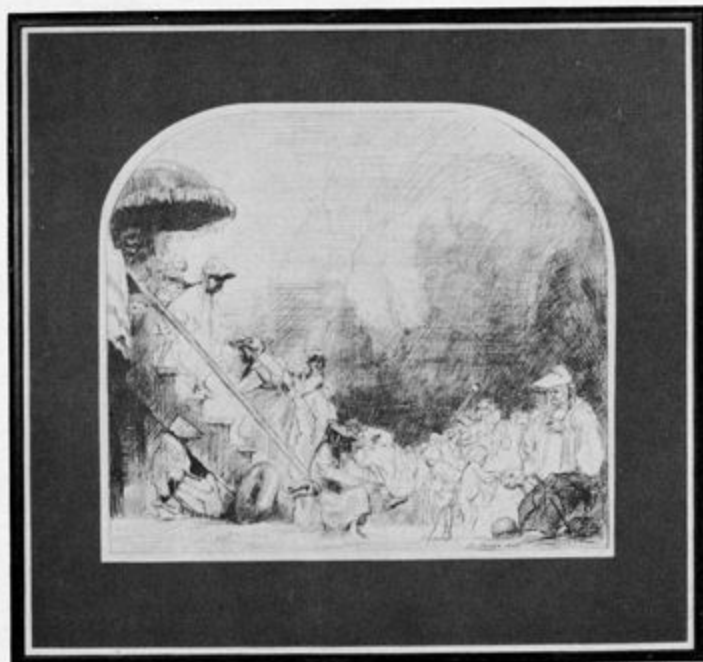
MARIE LAURENCIN
(1885-1956) French

For many years, Marie Laurencin associated with the Cubist literary and artistic groups of France, and yet her charming etchings proved that she was uninfluenced by their theories. Noted for her light, very feminine style and her charming use of color, she was brilliant, without exception, in her personal approach to the human figure.

F12 M 23—THE DANCERS. Colored lithograph, green, blue, pink, and black. Signed in the plate. 25x21 inches, framed, contemporary, gold leaf. \$85



F12 M 23



F12 M 24

Levine

DAVID LEVINE
(1926-) American

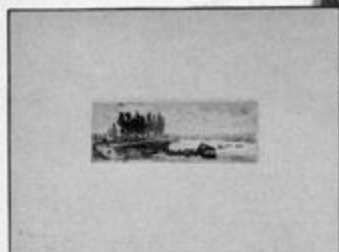
David Levine has worked since manhood to perfect his art. The drama of his compositions, combined with his use of light and shade, looks back to the 17th Century and the master hand of Rembrandt. Today, Levine is recognized as one of America's most brilliant draftsmen and is found in many distinguished collections, including that of President and Mrs. Kennedy.

F12 M 24—CONEY ISLAND. Lithograph, black and white. Signed and numbered. 31x33 inches, framed, ebony finish with a white insert. \$120





F12 M 25



LALANNE

MAXIME LALANNE
(1827-1886) French

Maxime Lalanne was one of the most notable French etchers of the 19th Century. His ability to express the grace and elegance of great buildings, vast towns, and delicate landscapes with their trees outlined against the sky accounts for the ever-increasing number of collectors seeking his art...



F12 M 26



F12 M 25—BORDEAUX. Etching, black and white. Signed in the plate. 14x19 inches, framed, antique gold. \$40

F12 M 26—LE CUSSET. Etching, black and white. Signed in the plate. 14x19 inches, framed, antique gold. \$40

Redouté

PIERRE JOSEPH REDOUTE
(1759-1840) French

The name of Redouté, the great French 18th and 19th Century artist, is one which is synonymous with floral art. His charming colored lithographs of flowers have been prized collectors' items from the time they were first published. As decorations and as works of art his superb series of flowers and lilies are incomparable.

Shown here is but one example of this famous Flower Series. Similar floral subjects, alike in color and content, will add charm and grace to the decor of any room in your home or office...

F12 M 27—FLOWERS AND LILIES. Colored lithograph, green, yellow, red, and pink. Signed in the plate. 33x24 inches, framed, gilt silver with an elaborate French mat. \$60



F12 M 27





F12 M 30

Man Ray

MAN RAY
(1890-) American

Of all the 20th Century Artists, Man Ray is undoubtedly one of the most fascinating. Best known as the only American Dadaist (the school of art which sought not to create a new art, but rather to deny the ancient traditions in art) of any consequence, Man Ray has today become a living history, a leading survivor along with Marcel Duchamp in the school of Dadaism. A pioneer in the movement of modern art, Man Ray's influence is felt today in the present movement known as "Pop Art."

For Man Ray, art is a vehicle for ideas and not for mere painting. The important thing for Man Ray is not consistent style, but invention. Cleverness has always surrounded Man Ray's witty compositions. As a painter, photographer, idea man and joker, Man Ray has certainly helped to make cultural history.

Because of his uniqueness in the world of art, The Vincent Price Collection recently commissioned Man Ray's restive imagination to create something for Sears.* Man Ray's final solution is his "Still Life," which reveals, as always, his own amusing, exquisite sensibility.

F12 M 30—STILL LIFE. Colored lithograph, red, yellow, and dark purple. Signed and numbered. 24x26½ inches, framed, gold leaf with white linen liner.....\$95

**This limited edition is available exclusively from the Vincent Price Collection.*

Exclusively from Sears

ENGLISH ART

The Vincent Price Collection proudly presents its unprecedented collection of the accomplished works of England's most gifted graphic artists. The talent represented in our English Collection is that of a new generation, possessing a unique and spirited awareness to the sensitivities and beauties of the visible world.

Jack Coutu is one of England's most prominent sculptors and printmakers. His firm convictions that nature forms the basis of art are revealed with a remarkable sensitivity . . .

John Brunson's imaginative formal abstract constructions can be found in all major museum collections of modern art . . .

George Chapman is an artist of deep sincerity and his etchings speak of an invigorating harshness, dramatically revealed in Chapman's own personal way . . .

John Sturgess is unique in his investigation of the sculptural qualities of English Art and Architecture. He pursues his art with a vigor and originality which account for his present recognition by the Museum of Modern Art . . .

Julian Trevelyan's genius is held in great esteem. In his adventurous renaissance he explores the mystical meaning and traditions of medieval Europe. Trevelyan is represented in the many major museums and private collections of modern art throughout the world . . .



F12 M 69



Vincent Price Collection of Fine Art

JACK COUTU . . Contemporary

F12 M 69—BIRD OF PARADISE. Etching, black and white. Signed and numbered. 26x20 inches, framed, contemporary, silver leaf. . . . \$65

F12 M 70—YOUNG BIRD. Etching, black and white. Signed and numbered. 21x16 inches, framed, contemporary, silver leaf. . . . \$45

JOHN BRUNSDON . . Contemporary

F12 M 71—ETCHING PRESS. Colored etching, blue, brown, black and white. Signed and numbered. 32x23 inches, framed, contemporary, waxed black stem. . . . \$120

F12 M 72—TURNING WHEEL. Colored etching, red, black and white. Signed and numbered. 32x23 inches, framed, contemporary, silver leaf. . . . \$120

GEORGE CHAPMAN . . Contemporary

F12 M 73—LOVER'S WALK. Colored etching, ochre, black, gray. Signed and numbered. 36x22 inches, framed, traditional, silver leaf. . . . \$120

JOHN STURGESS . . Contemporary

F12 M 74—WESTMINSTER ABBEY II. Colored etching, green, blue, black and white. Signed and numbered. 25x29 inches, framed, traditional, silver leaf. . . . \$100

JULIAN TREVELYAN . . Contemporary

F12 M 75—WINDSOR CASTLE. Colored etching, lime green, gray, black, red, white, blue gray. Signed and numbered. 25x34 inches, framed, contemporary, silver leaf. . . . \$90

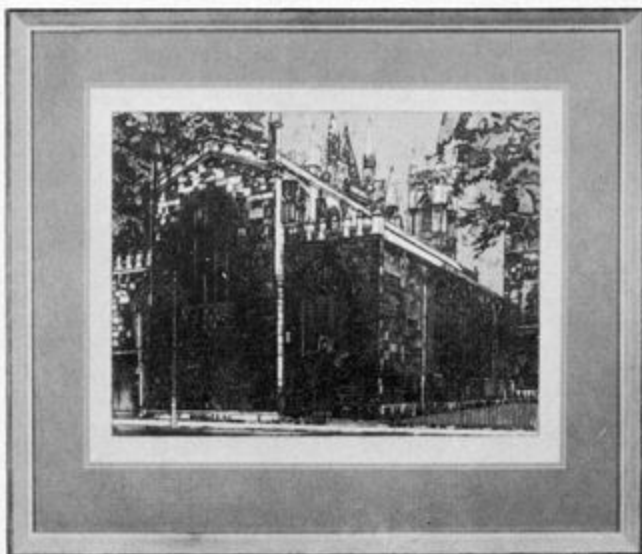
F12 M 76—HENLEY. Colored etching, water blue, black, taupe, white. Signed and numbered. 25x34 inches, framed, contemporary, silver leaf. \$90

F12 M 77—TOWER BRIDGE. Colored etching, turquoise, red, black, green, white. Signed and numbered. 25x34 inches, framed, contemporary, silver leaf. . . . \$90

F12 M 78—JESUS COLLEGE. Colored lithograph, parchment brown, white, purple. Signed and numbered. 25x32 inches, framed, contemporary, silver leaf. . . . \$90



F12 M 73



F12 M 74



F. LEGER

FERNAND LEGER
(1881-1955) French

Fernand Leger will always be counted as one of the most important and expressive Masters of the 20th Century. In his art, Leger followed a course distinctively his own, drawing inspiration more directly from contemporary life than almost any other master. The man-made objects of the machine age, the sturdy men and women of the city are part of Leger's very personal style, and it is to them that Leger turned to seek his inspiration.

Illustrated here is one example from *Le Cirque*. Other important examples similar in feeling, color and content are available for your own art collection.

F12 M 28—LA VILLE. Colored lithograph, red, blue, yellow, black and orange. Signed with the stamp of Leger's atelier. 26x24 inches, framed. Contemporary, gold leaf. \$100

F12 M 29—LE CIRQUE. Colored lithograph, blue, yellow, red, orange and brown. 27x23 inches, framed. Contemporary, gold leaf. \$125

NOTE: LE CIRQUE was printed posthumously.



F12 M 29

Millet.

JEAN FRANCOIS MILLET
(1814-1875) French

In all examples of his etchings, Jean Francois Millet revealed a deep, genuine sense of serenity and spiritual humility. His simple people, rich in gesture and in the sentiment portrayed by their motions will always appeal to those millions caught in the hectic life of the 20th Century who all too often have lost contact with the reality of nature.

F12 M 31—SHEPHERDESS KNITTING. Etching, black and white. 22x18 inches, framed, antique gold. \$60

F12 M 32—WOMAN SEWING. Etching, black and white. 19x15 inches, framed, antique gold. \$45

F12 M 33—THE DIGGERS. Etching, black and white. 18x22 inches, framed, antique gold. \$60

F12 M 34—WOOL CARDER. Etching, black and white. Signed in the plate. 20x22 inches, framed, antique gold. \$50

F12 M 35—THE CHURCHER. Etching, black and white. 20x15 inches, framed, antique gold. \$40

F12 M 36—MAN LEANING ON A SPADE. Etching, black and white. 19x15 inches, framed, antique gold. \$40

F12 M 37—THE GLEANERS. Etching, black and white. 15x20 inches, framed, antique gold. \$45

PLEASE NOTE: Like Rembrandt, Millet did not sign most of his etchings. These are the last original examples of this master's work as all of Millet's plates have now been destroyed.



F12 M 37



F12 M 33





F12 M 36



F12 M 34



F12 M 38



Ossi

OSSI

Contemporary—Italian

Heralded and acclaimed by the public and critics in the United States and in Europe, Ossi's development as a mature artist has now been fully realized. Her original colored etchings of the "Signs of the Zodiac" are essential in any collection of modern art.

F12 M 38—12 SIGNS OF THE ZODIAC. Colored lithographs, each individually colored. Signed and numbered. 25x20 inches, framed, contemporary, silver leaf. Specify sign desired. . . . \$30

ARIES—Pale aqua, fern green, gray, red . . . March 21-April 20

TAURUS—Gray, taupe, black, lemon yellow . . . April 21-May 20

GEMINI—Gray, aqua, light orange, fern green . . . May 21-June 21

CANCER—Red, mustard green, gray, black . . . June 22-July 22

LEO—Gray, taupe, black, red . . . July 23-August 22

VIRGO—Blue, gray, taupe, rust . . . August 23-September 22

LIBRA—Taupe, fern green, gray . . . September 23-October 22

SCORPIO—Gray, aqua green, orange, fern green . . . October 23-November 21

SAGITTARIUS—Gray, taupe, rust, aqua . . . November 22-December 21

CAPRICORN—Taupe with rust, aqua, charcoal . . . December 22-January 19

AQUARIUS—Gray, aqua, medium green, gray . . . January 20-February 18

PISCES—Aqua, taupe, gray, lemon yellow . . . February 19-March 20



VincentPriceExhibit

Picasso

PABLO PICASSO
(1881-) Spanish

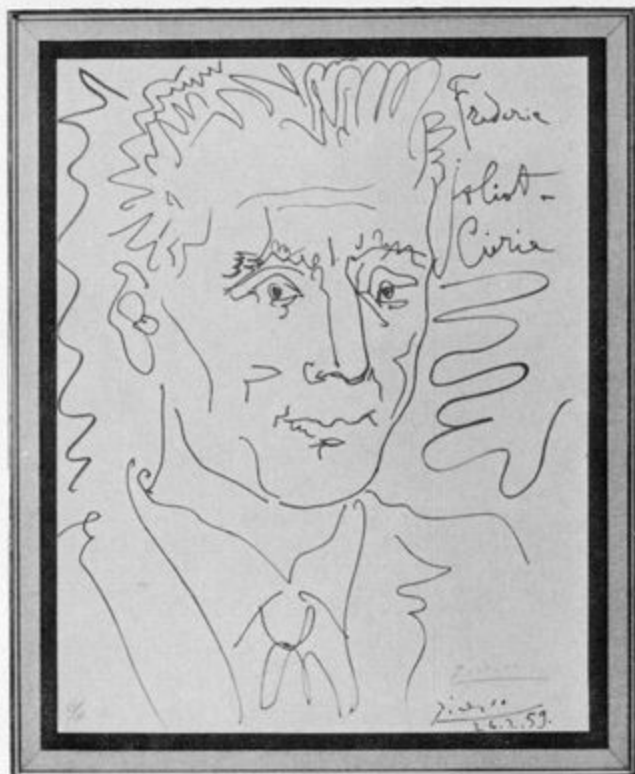
Pablo Picasso stands alone... as great artists always do. His inventions are fantastic and his range staggering. For Picasso, each work of art is approached as an individual entity and has made him a giant and living legend in the world of art....

F12 M 39—JOLIET CURIE. Lithograph, black and white. Signed and numbered.

29½x24 inches, framed, contemporary, gold leaf, gold linen liner.....\$300

F12 M 40—PORTRAIT OF MACHADO. Lithograph, black and white. Signed and numbered.

29½x24 inches, framed, contemporary, gold leaf, white linen liner.....\$275



F12 M 39



F12 M 41



F12 M 43

Pollack

REGINALD POLLACK
(1924-) American

One of America's most important painters, Reginald Pollack lived and worked in Paris until last year when he moved back to his native New York. He has gone through many stages in his development and has arrived at his present stage, which is highly personal and beautifully realized.

F12 M 79—OLD MAN AT TABLE. Lithograph, black and white. Signed and numbered.

21x25 inches, framed, ebony finish. \$75

F12 M 41—MARIO AS ARAB. Colored lithograph, red and white. Signed and numbered.

24x22 inches, framed, gold leaf. . . \$95

F12 M 42—STILL LIFE WITH GARLIC. Lithograph, black and white. Signed and numbered.

33x38 inches, framed, ebony finish. \$100

F12 M 43—ACTOR, ¾ VIEW. Lithograph, black and white. Signed and numbered.

39x32 inches, framed, ebony finish. \$120





F12 M 44



F12 M 46

Piranesi

GIOVANNI BATTISTA PIRANESI
(1720-1778) Italian

Giovanni Battista Piranesi, etcher, draftsman and architect, stands as one of the last great giants of the Renaissance. His intense feeling for the poetry of the ruins of Rome exerted a great influence on 18th Century Architecture. Approaching Roman Architecture with a great imaginative vision, he mastered and surpassed the mechanical regularity of the engravers of his time and concentrated on the dramatic effects of light, air and perspective. In his "Views of Rome" Piranesi created the most dramatic portraits ever made of any city.

VIEWS OF ROME

F12 M 44 — ARCHITECTURAL VIEWS OF ANCIENT ROME. Churches, Fountains and Palaces of Rome. Etching, black and white. Signed in the plate. 32x41 inches, framed, finished fruitwood. \$125

F12 M 45 — ARCHITECTURAL VIEWS OF ANCIENT ROME. Aqueducts, Temples and Theaters of Rome. Etching, black and white. Signed in the plate. 32x41 inches, framed, finished fruitwood. \$125

F12 M 46 — THE SCULPTURE OF ANCIENT ROME. Etching, black and white. Signed in the plate. 32x41 inches, framed, gold leaf. \$75

Rivers

LARRY RIVERS
(1923-) American

Larry Rivers is one of the most controversial yet highly respected artists of the 20th Century. Rivers is talented in many fields, including music, and is truly a Renaissance Man. We present here one of his limited ventures into graphic art... a must in all collections of modern art.

F12 M 47 — WEBSTER. Lithograph, black and white. Signed and numbered. 33x38 inches, framed, ebony finish with a white insert. \$95



F12 M 47



Rembrandt

REMBRANDT VAN RIJN
(1606-1669) Dutch

In his day, Rembrandt's artistic spontaneity was too revolutionary to be understood. Today, however, he is recognized as probably the greatest master of modern times. It was his inquisitive mind and his concentration on the soul of his sitters that have made him understandably human...

F12 M 48—CHRIST PREACHING TO THE SICK. Etching, black and white. This etching is one of the early rare states and was never signed by Rembrandt. It comes from the famous Rovinski Collection.

24x15 inches, framed, gold leaf. **\$.2,000**

F12 M 49—ADAM AND EVE. Etching, black and white. Signed in the plate, dated 1638.

20x15 inches, framed, gold leaf. . . **\$.300**

F12 M 50—ABRAHAM DISMISSING HAGAR AND ISHMAEL. Etching, black and white. Signed in the plate, dated 1637.

20x15 inches, framed, gold leaf. . . **\$.275**

F12 M 51—THE RAT KILLER. Etching, black and white. Signed in the plate, dated 1632.

20x15 inches, framed, gold leaf. . . **\$.280**

F12 M 52—THE FOURTH ORIENTAL HEAD. Etching, black and white. Initialed in the plate.

20x15 inches, framed, gold leaf. . **\$.275**

F12 M 53—THE MARTYRDOM OF ST. STEPHEN. Etching, black and white. Signed and dated in the plate, 1635.

20x14 inches, framed, gold leaf. . **\$.300**



F12 M 48



5 Rouault

GEORGES ROUAULT
(1871-1958) French

Georges Rouault was one of the greatest printmakers of this or any age. He was truly the most outstanding religious artist of the 20th Century. His themes are directed toward the social functions of the message of art, speaking of mankind's frailty and his redemption, and Rouault's emotional intensities are best realized in his graphic work. His famous etchings, *Le Miserere* and *The Passion*, now recognized as monuments in the World of Art, are revealed with an intensity of feeling equalled only during the Middle Ages.

F12 M 55—THE PASSION. Etching, black and white. Signed in the plate. 21½x17½ inches, framed, contemporary, gold leaf, black linen liner. . . **\$.125**

F12 M 56—LE MISERERE. Etching, black and white. Signed in the plate. 30x35 inches, framed, contemporary, ebony finish with antique gold. . . **\$.250**

NOTE: Illustrated here is one example from the famous *Le Miserere* and one example from *The Passion*. Similar themes alike in their emotional content and feeling may be purchased according to your preferences.



F12 M 55



F12 M 56





F12 M 57



F12 M 58

Vertès

MARCEL VERTÈS
(1895-1961) French-Hungarian

Marcel Vertès grows out of the tradition of Toulouse-Lautrec and has been recognized since the 1920's as an unrivalled master of sophisticated style, creating the gay and the graceful, the delicate and the bright. A subtle, ironical man of the world, Vertès' works hold a unique place in the field of contemporary art.

F12 M 57—GIRL WITH FLOWERS. Lithograph, black and white. Signed and numbered. 33½x26¼ inches, framed, traditional, silver leaf. \$100

F12 M 58—LES TROIS ENFANTS. Colored lithograph, blue, yellow and white. Signed and numbered. 29x33½ inches, framed, contemporary, silver leaf. \$100

F12 M 59—DANCING DOGS. Colored lithograph, pink, white and black. Signed and numbered. 29x23½ inches, framed, traditional, silver leaf. . . . \$100

F12 M 60—CIRCUS MOTHER. Colored lithograph, green and white. Signed and numbered. 26½x33 inches, framed, antique gold. \$100

Vlaminck

MAURICE DE VLAMINCK
(1876-1958) French

Maurice de Vlaminck was one of the first great names in the movement of "modern art." He was a rugged individualist, opposed to any form of artistic regimentation and discipline. Vlaminck is best known for his popular landscape style, so eagerly sought after by art lovers in our time.

F12 M 61—ASPECT DE LA GRANDE RUE. Etching, black and white. Signed in pencil. 15x19 inches, framed, antique gold. \$130

F12 M 62—LE MARIE. Etching, black and white. Signed in pencil. 15x19 inches, framed, antique gold. \$130

F12 M 63—LE CAFE DE PARIS. Etching, black and white. Signed in pencil. 15x20 inches, framed, traditional, silver leaf. \$130

F12 M 64—LA RUE. Etching, black and white. Signed in the plate. 24¼x17½ inches, framed, traditional, silver leaf \$95



F12 M 64



F12 M 63



Whistler

**JAMES ABBOTT McNEILL
WHISTLER**

(1834-1903) American

James Abbott McNeill Whistler was a supreme master and one of the first American artists to gain an international reputation. He worked mostly in England but always remained American at heart. As an artist he never became complacent or set in his ways, and consequently his work covers a wide range. Today his valuable etchings are sought after by museums and private collectors the world over.

F12 M 65—LA VIELLE AUX LOQUES. Etching, black and white, rare. Signed in the plate.

19½x14½ inches, framed, traditional, silver leaf, black tone. \$125

F12 M 66—LITTLE RAG GATHERERS. Etching, black and white. Signed in the plate.

20x15 inches, framed, gold leaf, with umber rub. \$45

F12 M 67—ANNIE SEATED. Etching, black and white. Signed in the plate. 20x15 inches, framed, contemporary, silver leaf. \$40

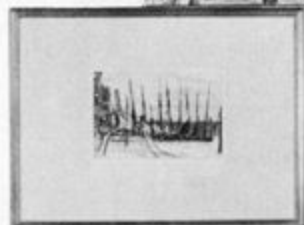
F12 M 68—BILLINGSGATE. Etching, black and white. Signed in the plate. 14x9 inches, framed, antique gold. . \$50



F12 M 67



F12 M 68



F12 M 66



F12 M 65



How to Acquire Original Works of Fine Art at Sears

HOW TO ORDER . . List your selections on the enclosed order blank. Print or write plainly your full name and complete address. Give us the catalog number, title and price of each of your selections. Total the prices and add taxes if applicable. If a credit order, check the proper square at bottom of order blank and have the head of household answer questions and sign agreement on back. If a cash order, enclose a post office or express money order, bank draft or check.

Your selections will be shipped from our warehouse in Chicago, with all shipping charges paid by us.

Please allow at least 3 weeks for delivery.
(Sorry, no C.O.D. orders.)

IF YOU WRITE ABOUT AN ORDER . . Send all correspondence regarding the Vincent Price Collection of Fine Art to Sears, Roebuck and Co., Dept. 9921, Chicago, Illinois 60607. If you find it necessary to write after you receive your order, be sure to include all papers concerning the order. The more details you give us, the faster we can serve you. *All adjustments or returns handled through Chicago, Illinois, Department 9921 only.*

IMPORTANT TAX NOTICE . . We are required by law to collect tax on sales for states, cities and counties at the rate indicated on enclosed order blank. If existing taxes are changed, we shall charge accordingly.

Buy Any Selection from this Catalog on Credit and make No Down Payment whatever

SEARS EASY TERMS..Up to 18 months to pay

Minimum purchase to open an account \$20;
minimum "add-on" purchase \$5

To order on Easy Terms, simply have the head of household answer the questions on back of order blank, sign the agreement and mail your order to Sears. There is no down payment required when you buy from this or any other Sears Catalogs.

If you already have an open account, there is no down payment and in many instances no increase in monthly payments when you "add-on" orders. Write on your order, "Add to my account," show account number and sign agreement.

You may prefer to buy from Sears on a convenient Revolving CHARGE ACCOUNT. No money down or minimum purchase required. Pay your charge each month within 30 days of the billing date with no service charge, or stretch your payments out over months (a small service charge added each month). See agreement and payment table on the back of the order blank.

If Total Cash Price (plus any sales tax less any deposit) amounts to	We Shall Add for Credit Price	Amount Payable Monthly is
Up to \$10.00 \$10.01 to 12.50 12.51 to 15.00 15.01 to 20.00	10% \$1.25 1.50 2.00	\$3.00
20.01 to 25.00 25.01 to 30.00	2.50 3.00	4.00
30.01 to 35.00 35.01 to 40.00 40.01 to 45.00 45.01 to 50.00	3.50 4.00 4.50 5.00	5.00
50.01 to 55.00 55.01 to 60.00	6.00	6.00
60.01 to 65.00 65.01 to 70.00	7.00	7.00
70.01 to 80.00 80.01 to 90.00 90.01 to 100.00	8.00 9.00 10.00	8.00 8.50 9.00
100.01 to 110.00 110.01 to 120.00 120.01 to 130.00	11.00 12.00 13.00	10.00 10.00 10.00
130.01 to 140.00 140.01 to 160.00 160.01 to 180.00 180.01 to 200.00 200.01 to 220.00	14.00 16.00 19.00 21.00 23.00	11.00 11.50 12.50 14.00 15.00
220.01 to 240.00 240.01 to 260.00 260.01 to 280.00	26.00 30.00 33.00	16.00 17.00 17.50
280.01 to 300.00 300.01 to 320.00 320.01 to 340.00 340.01 to 360.00	36.00 38.00 41.00 43.00	18.50 20.00 21.00 22.50

Write for 24-Month terms over \$360.00



VincentPriceExhibit

GLOSSARY

GRAPHIC ARTS is the term applied to the artist's method of producing more than one example of a given work of art. Etchings, lithographs, engravings, and woodcuts are all various forms of the graphic arts and are all artist originals. These originals are often numbered as they are taken from a given plate.

ETCHING is the process of covering a metal plate with wax, scratching the picture in the wax and dipping the whole in acid. Where the metal is exposed, the acid bites a groove. The wax is removed and the metal plate is inked, wiped off, and pressed against damp paper. The ink in the grooves is drawn to the paper and forms the image.

LITHOGRAPHY is the process of drawing on a prepared slab of stone with a crayon. The stone is dampened and ink is applied. The ink adheres only to the drawing. When paper is pressed against the stone, the ink is transferred, and the drawing is reversed on the paper. The term "lithography" is sometimes used to describe commercial reproductions. There are no such reproductions in the Vincent Price Collection.

AN ENGRAVING is made by cutting a groove into a metal plate, spreading the plate with ink, wiping the ink off the surface and pulling the ink out of the groove onto a piece of paper.

A WOODCUT is a relief process. The design is drawn directly on the wood block. Areas that are not to be printed are cut away and the raised surface is inked and printed.

*Prices in this catalog are in effect
until July 31, 1964*



**SATISFACTION GUARANTEED
OR YOUR MONEY BACK**

F53517-9-3-63



VincentPriceExhibit